



CAVITY WALL (CWB) INSULATION

PRODUCT NAME

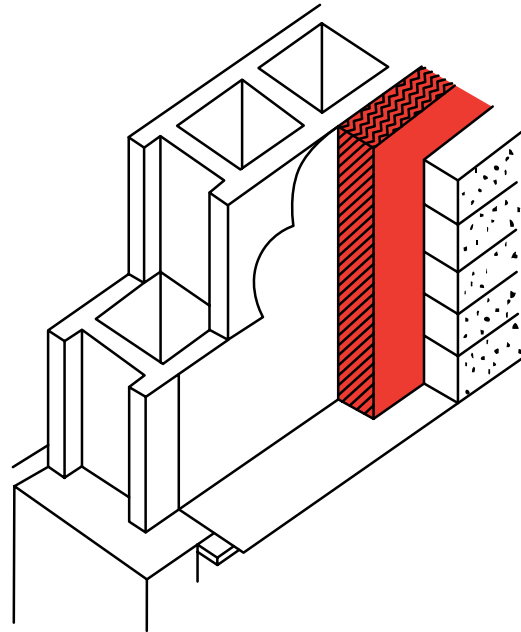
FIBREX CAVITY WALL BOARD (CWB)
CWB 30 and CWB 45

MANUFACTURER

FibreX Insulations Inc.
561 Scott Road
Sarnia, Ontario N7T 7L4
Phone: 1-800-265-7514
Fax: 1-800-363-4440

PRODUCT DESCRIPTION

FibreX Cavity Wall (CWB) Insulation provides superior fire resistance, acoustical, and thermal properties when installed in masonry faced cavity wall systems when combined with trowel-on, peel-n-stik, or torchable air barrier products.



It is manufactured from basalt rock, utilizing patented technology, with a melting point in excess of 2000°F (1093°C). The fibres are bonded and preformed into two types of self-supporting, semi-rigid or rigid boards that provide superior handleability and easy fabrication/installation capabilities.

PRODUCT INFORMATION

STANDARD SIZES	16" X 48" 24" X 48" (406mm X 1220mm) (610mm X 1220mm) Custom and hard metric sizes available
STANDARD THICKNESSES	1" to 4" (25mm to 102mm) 1/2" (13mm) increments
MOISTURE ADSORPTION	less than 0.1% by volume when tested in accordance with ASTM C553, section 14
SURFACE BURNING CHARACTERISTICS	Flame Spread 5 Smoke Developed 0 when tested in accordance with CAN4-S102, ASTM E-84, and UL 723
NON-COMBUSTIBILITY	material listed as non-combustible by ULC and UL; tested in accordance with CAN4-S114 and ASTM E-136
NON-CORROSIVE	will not cause or contribute to corrosion; NRC 1.36, ASTM C692, ASTM C795 and ASTM C871
HEAT SHRINKAGE	ASTM C356, -1.2% by volume
WATER VAPOUR PERMEANCE	ASTM E96-95, 16.6 perms as tested
WATER VAPOUR SORPTION	ASTM C1104/C1104M-95, 0.04% by volume

THERMAL PERFORMANCE (ASTM C518)

FIBREX CAVITY WALL BOARD (CWB 30)			FIBREX CAVITY WALL INSULATION (CWB 45)		
THICKNESS	R VALUE	RSI	THICKNESS	R VALUE	RSI
1"	4.20	.74	1"	4.35	.75
1.5"	6.30	1.11	1.5"	6.52	1.13
2"	8.40	1.47	2"	8.70	1.51
2.5"	10.5	1.84	2.3"	10.00	1.73
3"	12.6	2.21	2.5"	10.90	1.89
3.5"	14.7	2.57	3"	13.05	2.26
4"	16.8	2.95	3.5"	15.22	2.64
			4"	17.40	3.02

SOUND ABSORPTION COEFFICIENTS

1/3 OCTAVE CENTER FREQUENCY (HZ)								
TYPE	THICKNESS	125	250	500	1000	2000	4000	NRC*
CWB 30	1 1/2" (38mm)	.13	.48	1.02	1.08	1.02	1.01	.90
	2" (51mm)	.20	.61	1.07	1.06	1.04	1.07	.95
	4" (102mm)	.88	1.14	1.17	1.08	1.06	1.10	1.10
CWB 45	1 1/2" (38mm)	.18	.62	1.08	1.08	1.03	1.07	.95
	2" (51mm)	.25	.85	1.15	1.10	1.04	1.06	1.05
	3" (76mm)	.80	1.07	1.11	.99	.98	.96	1.05

* Noise Reduction Coefficient

Tested in accordance with ASTM C423 and E795. The test specimen was applied directly against the test surface.

SPECIFICATION COMPLIANCE

ASTM C665, TYPE 1

ASTM C612, TYPE I, II, III and IV

(CAN/CGSB 51.10-92 (Type 2, Class 4)

DND - CONSTRUCTION MATERIALS BOARD (SCHEDULE 01000)
REFERENCE NO. 07212 - 03

CITY OF NEW YORK MEA 341-98-M

FED. SPEC. HH-558B

CONFORMS TO CAN/ULC S702.2 (Formerly CSA-A101-M83)



FIBREX
Insulations Inc.®

561 SCOTT ROAD
SARNIA, ONTARIO CANADA N7T 7L4
<http://www.fibrex.on.ca>

CUSTOMER SERVICE: 1-800-265-7514
1-519-336-7770
FAX: 1-800-363-4440

Technical Information:
Please ask for the name of your area representative.