



## MB PLUS, STEEL STUD, FBX 1260 AND FBX 1280 METAL WALL INSULATION

### PRODUCT NAME

MB Plus, Steel Stud, FBX 1260, and FBX 1280 Metal Wall Insulation

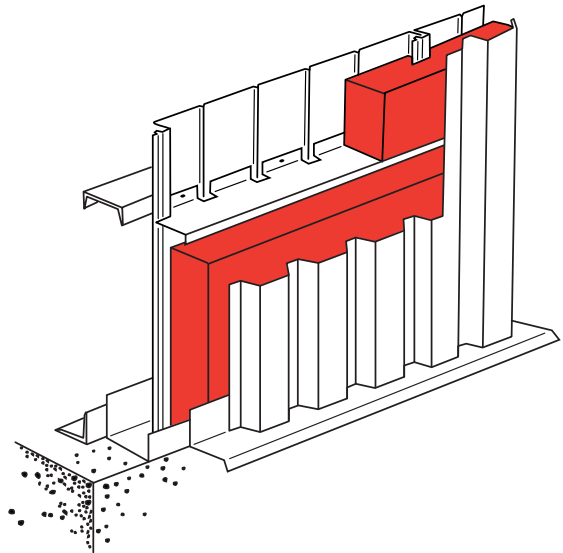
### MANUFACTURER

Fibrex Insulations Inc.  
561 Scott Road  
Sarnia, Ontario N7T 7L4  
Phone: 1-800-265-7514  
Fax: 1-800-363-4440

### PRODUCT DESCRIPTION

MB Plus insulation is a semi-rigid batt and FBX 1260 and FBX 1280 are board products that provide superior acoustical, thermal, and fire resistance properties. It is manufactured from basaltic rock which provides a product with a melting point in excess of 2000°F (1093°C).

The fibres are bonded and formed into self-supporting semi-rigid batts, that provide superior handling, easy fabrication, and solid application capabilities.



### PRODUCT INFORMATION

Complies with CAN/ULC S702 (formerly CAN/CSA A101M) as tested

STANDARD SIZES	16", 24", 32" x 48" (406mm, 610mm, 813mm x 1220mm)
STANDARD THICKNESSES	1 1/2" - 9" (1/2" increments) (38mm - 229mm)
MOISTURE ADSORPTION	less than 0.1% by volume
SURFACE BURNING CHARACTERISTICS (ULC S102) (E-84)	Flame Spread 5 Smoke Developed 0
NON-CORROSIVE	will not contribute to or cause corrosion (ASTM C692, C795, C871)
Board	CAN/CGSB 51-10-92
Batt	CAN/CGSB 51-11-92

### SPECIFICATION COMPLIANCE

NON COMBUSTIBLE ULC S114 (E-136)

FBX 1260 - Fire Wall Design W607 (1 hour) (2 hour)

FBX 1280 - Fire Wall Design W605 (1 hour) (2 hour)

\*NOTE: 2 hour - derived from Equivalent Opening Factor Formula

### THERMAL PERFORMANCE (ASTM C518)

FBX MB PLUS AND STEEL STUD		
THICKNESS	R VALUE	RSI
1.5"	6.00	1.05
2"	8.00	1.40
2.5"	10.00	1.75
3"	12.00	2.10
3.5"	14.00	2.45
4"	16.00	2.80

FIRE WALL DESIGN W607		
2 Layers	1 hour	2 hour
@4" = 8" wall		

FIRE WALL DESIGN W605		
2 Layers	1 hour	2 hour
@3" = 6" wall		



561 SCOTT ROAD, SARNIA, ONTARIO CANADA N7T 7L4  
<http://www.fibrex.on.ca>

CUSTOMER SERVICE: 1-800-265-7514 1-519-336-7770 FAX: 1-800-363-4440  
Technical Information: Please ask for the name of your area representative.

FBX-81-01